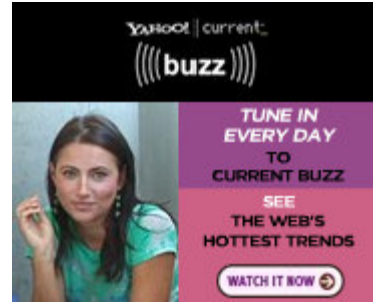




ADVERTISEMENT



Press Release

Source: Golden Eagle Log Homes

Golden Eagle Log Homes Goes Gucci-Rustic

Tuesday February 21, 2006 9:00 am ET

WISCONSIN RAPIDS, Wis., Feb. 21, 2006 (PRIMEZONE) -- Built on the edge of a two-acre lot on Lake Petenwell, Wisconsin, Golden Eagle Log Homes has constructed the ultimate Gucci-Rustic log home. The log home boasts more than 5,500 square feet of living space, characterized by the latest in technology and interior design. It was designed to be a functional lake property with the feel of a rustic retreat.

ADVERTISEMENT

The Next Home Run Stock

Alexandria, VA. Of course you'd love to buy the next Microsoft. Great investments rise to prominence from relative obscurity. Tom Gardner's mission is to uncover the greatest stocks for the next 10 years.

In "3 Hidden Gems Ready to Run," the Motley Fool co-founder reveals three small-cap "gems" he expects to double over the next 3-5 years.

Profit minded investors will read this Special Report before Wall Street does.

(Editor's note: As of 8/21/06 Hidden Gems® picks are up on average 27.29% vs. just 12.18% for the S&P 500.)

[Click here for today's FREE picks](#)

A TRUSTED SERVICE FROM The Motley Fool.

Golden Eagle Log Homes and Country's Best Log Homes have teamed up to design and construct the log home. The magazine also plans to write a series of articles in its national, semi-monthly publication. The venture will serve as a means of educating consumers on the design and construction process of a log home, from start to finish.

Due for completion in March of this year, the log home will be open to the public and used for fund-raising events to benefit the University of Wisconsin (UW) Children's Hospital of Madison, Wis. The hospital is a not-for-profit center with a complete children's medical and surgical center, pediatric intensive care unit, an internationally recognized transplant surgery program, a children's cancer

center and family-friendly atmosphere.

The Golden Eagle Showcase Home will be furnished with the latest in modern conveniences. The kitchen offers a Sub-Zero refrigerator and custom designed cabinets that are accented by the reflections of natural light from the lake. The cabin is also equipped with a wine cellar, a wine tasting room, a theater room and a fourth bedroom. The theater room has three rows of lighted and elevated custom seating, surround sound and a high definition large screen television. The theater also provides moviegoers a snack room with see-through glass countertops and display cabinet, not to mention a popcorn machine.

"The log home industry has grown over the years offering homebuyers a rustic form of primary living with modern amenities included," said, Jay Parmeter, owner of Golden Eagle Log Homes. "We feel that this Showcase home is a great way generate awareness for the UW Children's hospital."

A series of events are planned around the opening of the Golden Eagle Showcase Log Home, including private VIP parties and public open-house tours. All proceeds will be donated to the UW Children's Hospital. For more information, visit <http://www.showcaseloghomes.com/events.shtml>

About Golden Eagle Log Homes:

Golden Eagle Log Homes is known for building homes that range from small hunting cabins (800 square feet), to palatial homes in resort towns and communities all over the United States.

Showcase Log Home Project Partners:

Crestline Windows, Vetter Windows, Shaw Floors, Sashco Log Home Finishing Products, Ronny L Mayne Master Craftsman, Bryant, Heatilator, Icyne, Richco Structures, Golden Eagle Log Homes, Maax Aker, Bertch, Moen, Mansfield, Woodgrain Millwork, Weekes Forest Products, Axiom Audio, TW Masters Overhead Doors, Pro-Line Stone Veneer, Sikkens, Therma-Tru Doors and Antler Art Inc. For more information, visit http://www.showcaseloghomes.com/project_partners/index.shtml

AVAILABLE MEDIA:

Podcast: Golden Eagle Log Homes Builds Showcase Home (size: 2.7 k) To Be Used For Fund-Raising Events To Benefit The University Of Wisconsin Children's Hospital Of Madison. http://newsroom.eworldwire.com/media_uploads/showcaseloghomes-022006.mp3

Click for fullsize Video Clip: Golden Eagle Log Homes Builds Showcase Home (size: 4.1 k) To Be Used For Fund-Raising Events To Benefit The University Of Wisconsin Children's Hospital Of Madison. http://newsroom.eworldwire.com/media_uploads/showcaseloghomes-022006.wmv