



Golden Eagle LOG



If you're like most people, you're very busy, and don't have the time to shop for every single component in your new log home, we can help you. **Golden Eagle has the most complete log home package period and it is kiln dried too!**

We include the kitchen and bath cabinetry, countertops, fireplace, trim, prehung 6 panel pine doors, plumbing fixtures, light fixtures, closet shelving, overhead garage doors, medicine cabinets, even the kitchen sink. And yes, we offer choices on all these products too! All for about the same price as our competitor's shell package.

We make it easier... for you to own a log home

Golden Eagle offers many services:

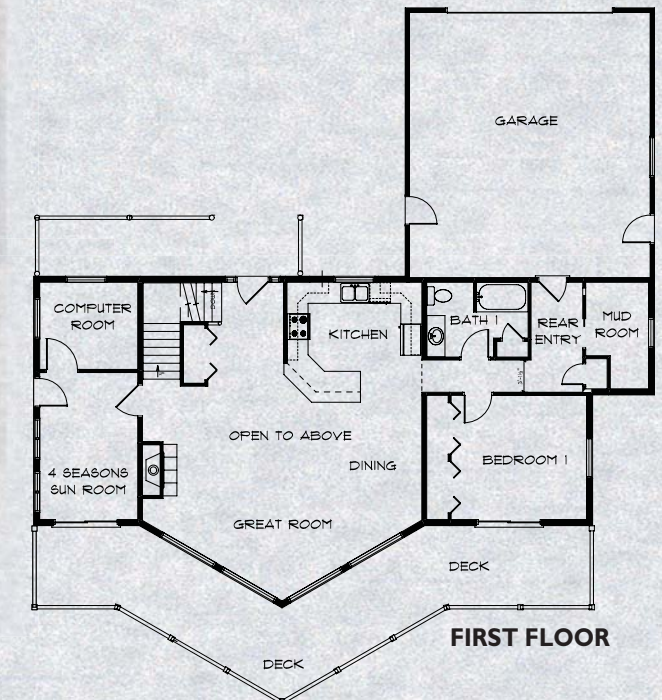
- Our professional **Log Home Planners** will work with you, one on one to find your perfect floor plan.
- We have certified **Log Home Kitchen Designers** to create your dream kitchen.
- We offer professional **pre-finishing options** on doors, trim, planking and windows.
- In our **8,000 sq. ft. dream showroom** select from different kitchens, lighting, wood flooring, roofing colors, fireplace stone, stain color, faucets and other plumbing fixtures like whirlpools and tub shower modules.
- You can be assured the **"complete package"** from *Golden Eagle Log Homes* will be engineered to work as a system; floors, roofs, walls, stairways, energy saving insulations, cabinets, door swings and window jamb sizes are all going to fit.

Golden Eagle even has a 25 year warranty. So if you want to uncomplicate your life, stop in or give us a call.

1-800-270-5025



Dealer Inquiries Invited



Eagle Prow V-Midwest

- BEDROOMS1
- BATHROOMS2
- FIRST FLOOR1,467 SQ. FT.
- LOFT448 SQ. FT.
- TOTAL SQ. FT. 1,915**

COMPLETELY BUILT approx. \$350,000 to \$450,000*
COMPLETE LOG PACKAGE \$127,102 to \$230,492

*Includes Complete Log Package

